

电机接线端与安装孔的相对角度不固定

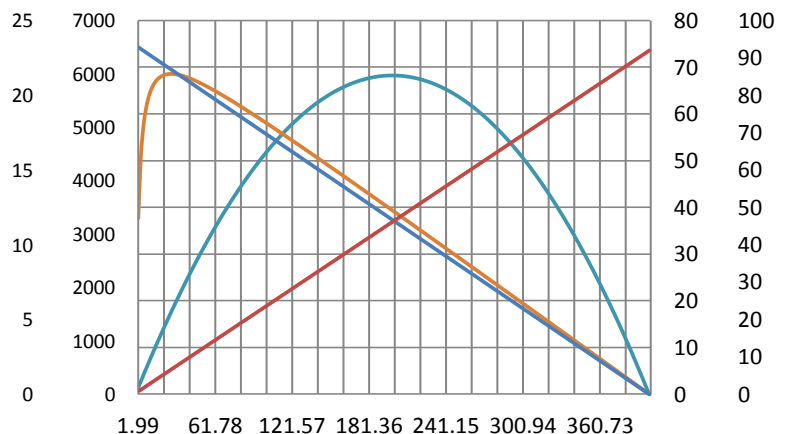
SINBAD EC MOTOR

电机参数 Motor Data			电机型号 Motor Model				
			XBD45100 H12065WG -0620	XBD4560H 24156WG- 0620	XBD45100 H36185WG -0620	XBD45100 H48098WG -0620	
额定电压参数值 Value at rated voltage							
额定点 At Nominal	1	额定电压 Nominal voltage	V/DC	12	24	36	48
	2	额定转速 Nominal speed	rpm	5232	12524	14824	7888
	3	额定电流 Nominal current	A	4.7	15.1	18.3	5.5
	4	额定转矩 Nominal torque	mNm	79.7	214.8	331.5	247.9
空载点 Free Load	5	空载转速 No-load speed	rpm	6540	15655	18530	9860
	6	空载电流 No-load current	mA	126.0	320.0	332.0	168.0
最大效率点 At Max. Efficiency	7	最大效率 Max. efficiency	%	85.7	87.3	88.2	84.8
	8	转速 Speed	rpm	6050	14637	17511	9121
	9	电流 Current	A	1.8	5.1	5.3	2.2
最大输出功率点 At max. Output power	10	转矩 Torque	mNm	29.9	69.8	91.2	93.0
	11	最大功率 Max. output power	W	68.2	440.2	804.0	320.0
	12	转速 Speed	rpm	3270	7827.5	9265	4930
	13	电流 Current	A	11.6	37.2	45.2	13.6
堵转点 At Stall	14	转矩 Torque	mNm	199.3	537.0	828.7	619.8
	15	堵转电流 Stall current	A	23.0	74.0	90.0	27.0
	16	堵转转矩 Stall torque	mNm	398.6	1074.0	1657.4	1239.6
	电机常数 Motor Constants						
	17	电机阻抗 Terminal resistance	Ω	0.52	0.32	0.40	1.78
	18	电机感抗 Terminal inductance	mH	0.16	0.14	0.12	0.15
	19	转矩常数 Torque constant	mNm/A	17.43	14.58	18.48	46.20
	20	转速常数 Speed constant	rpm/V	545.0	652.3	514.7	205.4
	21	转数/转矩常数 Speed/torque constant	rpm/mNm	16.4	14.6	11.2	8.0
	22	机械时间常数 Mechanical time constant	ms	42.2	30.0	23.0	20.4
	23	转子惯量 Rotor inertia	gcm ²	245.4	196.3	196.3	245.4

电机特性曲线 (Motor Characteristics Curve)

24	极对数 Number of pole pairs	1
25	相数 Number of phase	3
26	重量 Weight of motor g	520
27	噪音 Typical noise level dB	≤45

电机端子定义 Motor terminal definition		
Red	P1 V hall+5 VDC	铁氟龙
White	P2 Hall sensor A	铁氟龙
Yellow	P3 Hall sensor B	铁氟龙
Blue	P4 Hall sensor C	铁氟龙
Black	P5 GND	铁氟龙
Black	P6 Motor winding A	硅胶
White	P7 Motor winding B	硅胶
Red	P8 Motor winding C	硅胶



Connection : JST-PAP-08V-S

防护等级 Protection level IP 54 A rpm mN.m W %